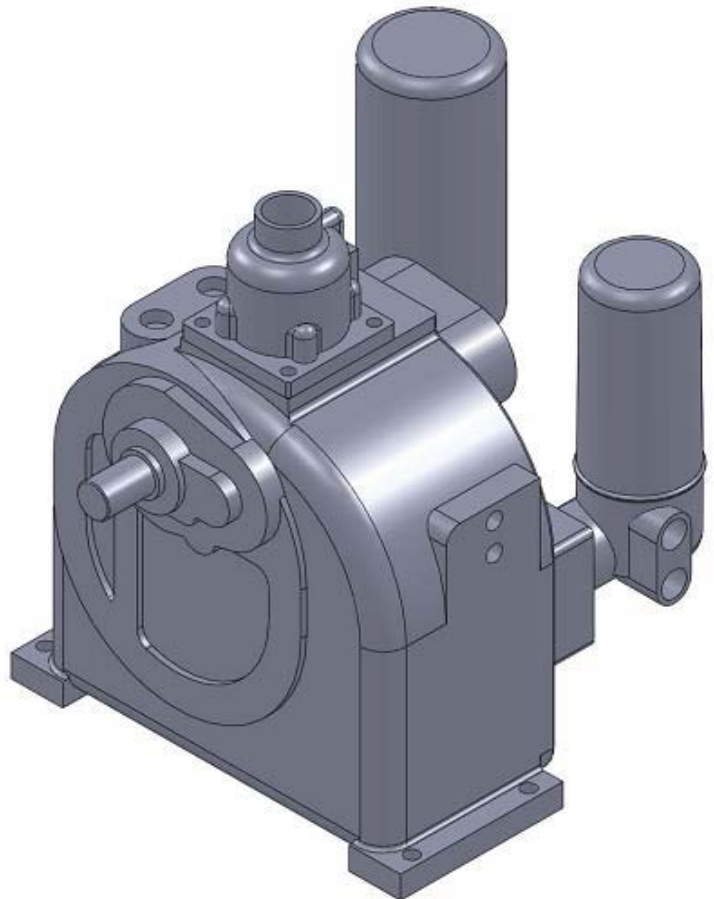


Oil-injected screw air end

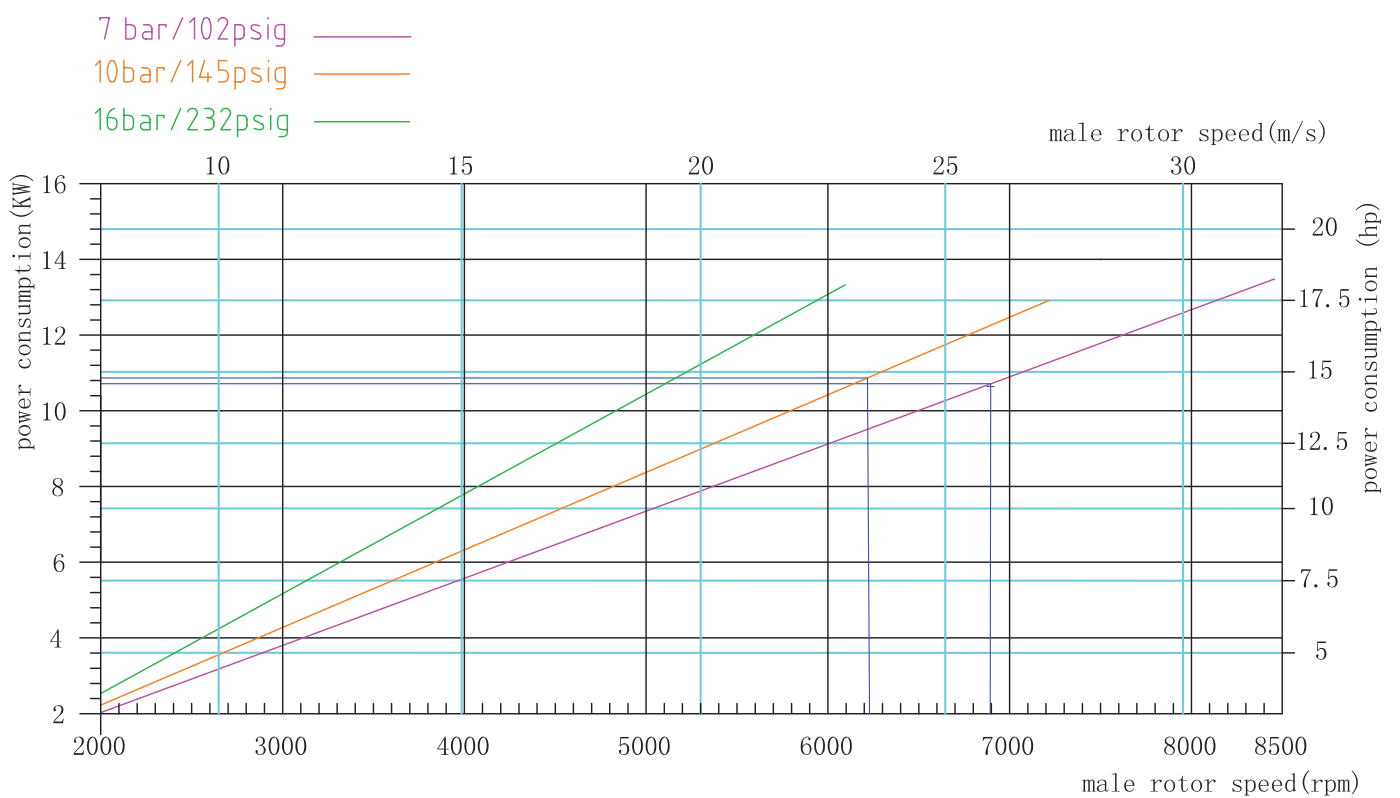
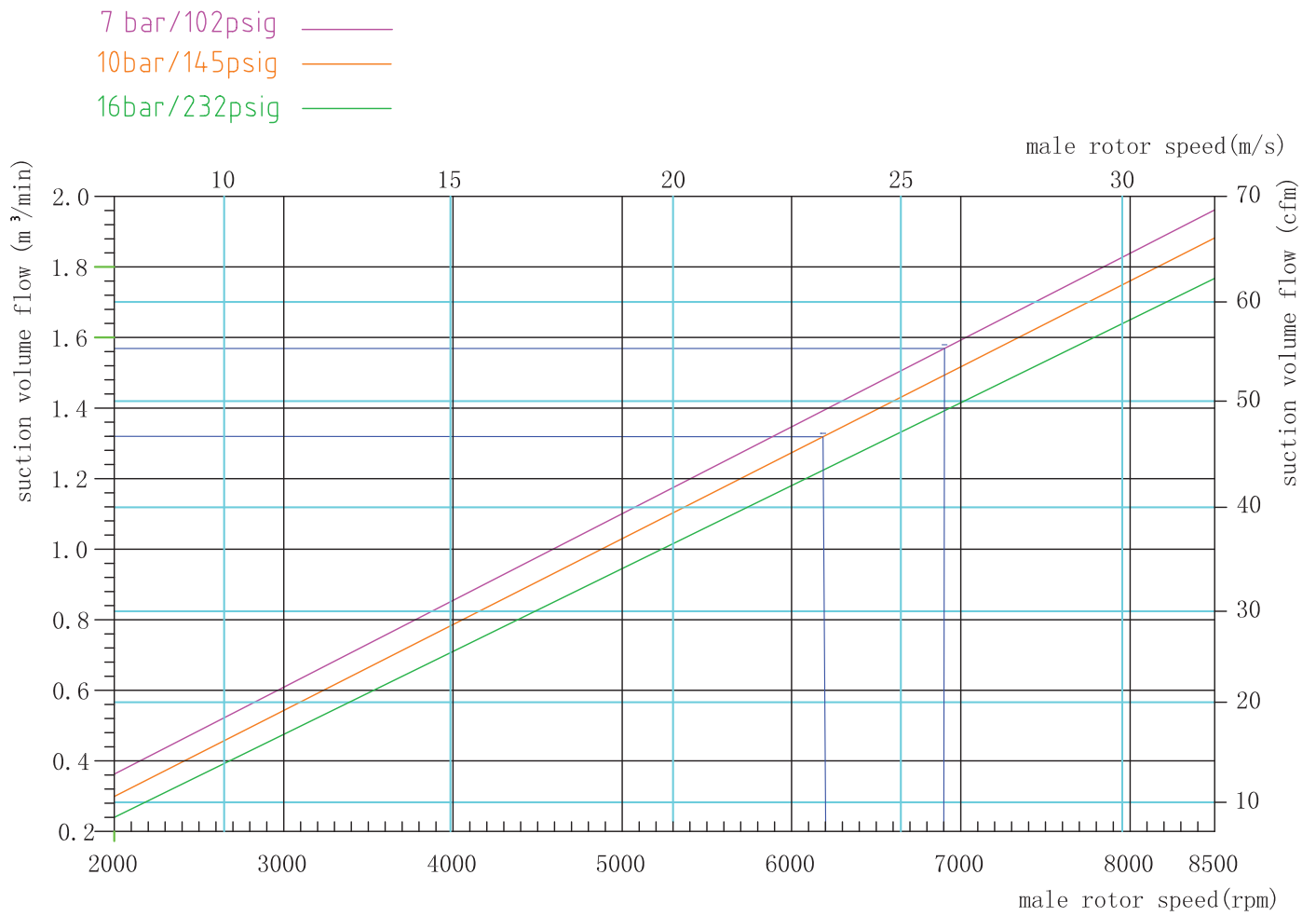
GCU11

power range [kw]	11
volum flow max [m ³ /min]	1.8
Pressure max [Barg]	12
Male rotor speed max [rpm]	8200
Lobe combination	5/6



Performance data

Performance statements according to ISO 1217



Oil-injected screw air end

GCU11

Installation drawing [mm]

Weight [kg] 66

